

Solar Cherub D7345

For correct usage, read these instructions carefully and keep in a safe place for future reference.

How the Solar Light Works:

During the day, the solar panel converts sunlight into electricity and recharges the battery. At night, the light turns on automatically using the electricity stored during the day. The performance of the solar light is dependent on your geographical location, weather conditions and seasonal light availability.

Choosing an Ideal Location:

Choose an outdoor location with full, direct sunshine where the solar panel can receive at least 6 hours of sunshine each day. Shady locations will not allow the battery to fully charge and will reduce the hours of light at night.

Please note: The selected location should not be near a strong lighting source such as streetlights, as the sensor inside the light may react to the light source and prevent the solar light from working.

Usage

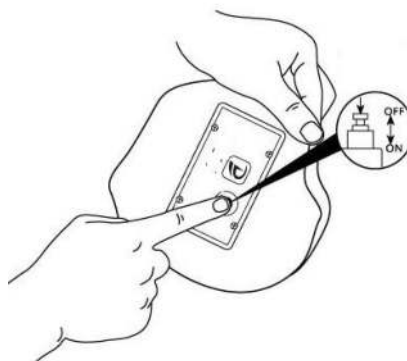
The solar light can be used for illuminating your garden or patio. Alternatively, you can leave the solar light outside during the day to charge and bring it into your home in the evening to illuminate your home.

Before First Use:

1. Turn the solar cherub upside down and press the ON/OFF button on the base (see Fig.1).
2. Charge the cherubs for a full day in direct sunlight, and the ornament will start working and automatically light up at night.

Please note: When you wish to save the energy the solar light has stored, simply press the ON/OFF button again to break the current.

Fig.1



Trouble Shooting:

After 6 hours of charging during the day, if the light does not turn on automatically at night, please check the following:

1. Make sure the power switch is in the "ON" position.
2. Check to make sure the battery is making contact with the terminals.
3. Make sure the light is in a sunny location (out of shade), and that the solar panel is facing the sun.

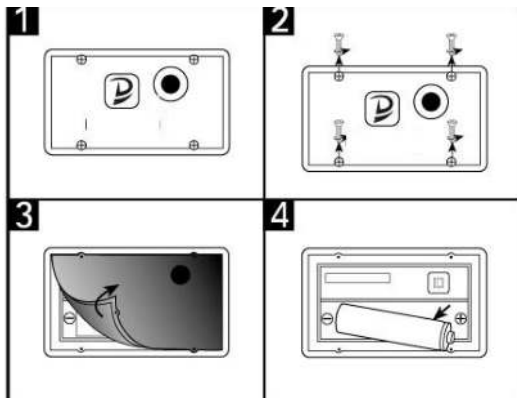
Precautions:

1. The light is designed to work when darkness falls. If there are strong light sources nearby, the LED light may be very dim or not work at all.
2. Although the battery is supplied in a charged state, the electric level will have probably dropped when you receive it. For this reason, charge the cherubs for a full day to achieve maximum performance.
3. To prevent incomplete charging of the cherubs, the solar panel must be kept clean by wiping it with a damp cloth on a regular basis.

Replacing the Batteries:

If the light stops working after it has been used for a long time (around 18 months), the battery may be exhausted. Simply open the battery cover, by removing the four screws with a screwdriver, and replace the battery with a new AA 1.2V Ni-MH battery (see Fig.2).

Fig. 2



Please note:

The lifespan of the LED is over 100,000 hours and cannot be replaced.

GUARANTEE

IMPORTANT

Please do not return this product without first calling the Customer Service number below:

0871 911 7031

Thank you for purchasing this product, which has been made to demanding high quality standards and is guaranteed for domestic use against manufacturing faults for a period of 12 months from the date of purchase.

Register your product for an extended 2-year warranty by visiting our website www.gardengearonline.co.uk. The product must be registered, along with your contact information, within 30 days of purchase. For full terms and conditions please visit our website.

This guarantee does not affect your statutory rights. If your product fails due to a defect in material or workmanship during this period, please return it to the place of purchase. Normal wear and tear is not covered under the guarantee.

Any guarantee is invalid if the product has been misused or subject to neglect or an attempted repair other than by our own service centre.

Due to continuous product improvement, we reserve the right to change the product specification without prior notice.

After Sales Customer Service:

Customer Service Department, Branded Garden Products Ltd, Premier House, Hortonwood 7, Telford, TF1 7GP UK

Telephone: 0871 911 7031

E-mail customerservice@gardengearonline.co.uk

Please retain for future reference.

Colours and contents may vary.

Waste electrical products should not be disposed of with household waste. Please recycle where facilities exist. Check with your Local Authority or retailer for recycling advice.

Please note that all products with the symbol below must be recycled.



*Calls cost 13p per minute, plus your phone company's access charge