

Three-Tier Wooden Cold Frame

G3919

General information and safety warnings

- Never overload your cold frame.
- Keep your plants watered and check on them daily.
- Do not allow children to play in or on the cold frame.
- Do not load on top of the cold frame.
- Assemble on a flat, level surface.
- Never drag the cold frame, always move by carrying equally between two people.
- Not suitable for commercial purposes.

Care and maintenance

To prolong the life of the cold frame, periodically clean the frame and polycarbonate panels with hot soapy water and dry thoroughly.

The wood may also require yearly wood preservative treatment.

The cold frame is designed to protect young seedlings or cover vegetables and flowers to extend the growing season.

Find a sunny yet sheltered location in your garden to place your cold frame.

Check plants in your cold frame daily, keep your plants watered.

Ventilation is important; even in early spring heat may build up quickly in the cold frame. Remember to open the cold frame to allow ventilation.

Remember to close the frame during the evening and overnight to protect young and delicate plants from frosts.

If you feel the need to secure the cold frame to the ground, after-market brackets can be purchased from local DIY stores or builders' merchants. Standard 'L-brackets' can be attached to the sides which will then allow you to secure to the ground (by tying, pegging or screwing).

Parts list



A: 1 PC



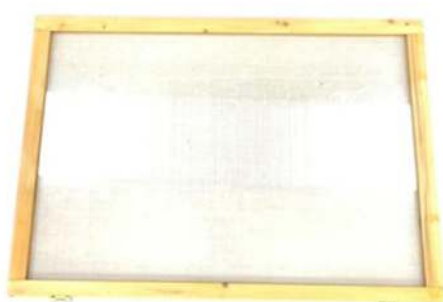
B: 1PC



C: 1PC



D: 2PCS



E: 1 PC



F: 1 PC



G: 1PC



H: 3PC



I: 1PC



J: 13PCS



K: 1PC



L: 10PCS



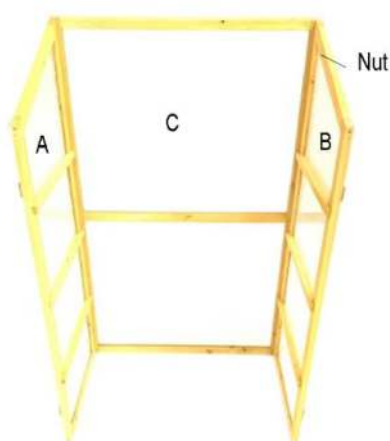
M: 1PC



N: 1PC

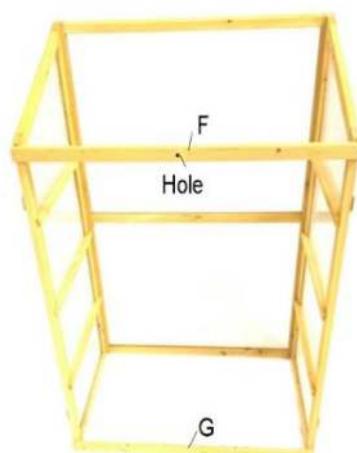
Assembly

- Carefully unpack the product and ensure that you have all the correct parts.
 - Assemble the cold frame on a flat, level surface.
 - Lay out everything that you need on a flat level surface.
 - We recommend that two people assemble this cold frame.
 - If you have trouble tightening the bolts you can use a socket set to assist you (not included).
 - During assembly, if any of the bolts are tight or out of line when fitting them, it may be that the others are screwed in too far, loosen them and this will make it easier to get the bolt into its location.
1. Attach the 2 sides (A & B) to the back (C) using 6 screws (L). Make sure the fitted nut is in the position shown.



1. Fix A, C & B with screw L x 6 PCS

2. Attach the top bar (F), with the hole for the screw facing forward as shown, to the sides (A & B), then attach the bottom bar (G) to the sides, using 4 screws (L).



2. Fix F & G to A & B with screws L x 4 PCS

3. Attach the 2 doors (D) to the hinges on sides (A & B) using 8 screws (J)



3. Fix D to A & B with J x 8 PCS

4. Attach the hinges on the top panel (E) using 4 screws (J) to the back panel (C).



4. Fix E to C with J x 4 PCS

5. Slot in the 3 shelves (H).



5. Put in H x 3pcs

6. Screw on the open/close bar (N) using 1 screw (J) onto the lid (E), then screw the wing nut (M) into the prefixed nut on the side (B).



6. Screw N with J, screw M on B .

7. Once the unit is fully assembled, tighten all screws. Then fix on the door latch (I) into the hole on the top bar (F) using screw (K).



7. Screw I on F with K

GUARANTEE

IMPORTANT

Please do not return this product without first calling the Customer Service number below:
0871 911 7031*

Thank you for purchasing this product, which has been made to demanding high quality standards and is guaranteed for domestic use against manufacturing faults for a period of 12 months from the date of purchase.

Register your product for an extended 2-year warranty by visiting our website www.gardengearonline.co.uk. The product must be registered, along with your contact information, within 30 days of purchase. For full terms and conditions please visit our website.

This guarantee does not affect your statutory rights. If your product fails due to a defect in material or workmanship during this period, please return it to the place of purchase. Normal wear and tear is not covered under the guarantee.

Any guarantee is invalid if the product has been misused or subject to neglect or an attempted repair other than by our own service centre.

Due to continuous product improvement, we reserve the right to change the product specification without prior notice.

After Sales Customer Service:

Customer Service Department, Branded Garden Products Ltd, Premier House, Hortonwood 7, Telford, TF1 7GP, UK

Telephone: 0871 911 7031*

E-mail customerservice@gardengearonline.co.uk

Please retain for future reference.

Colours and contents may vary.

*Calls cost 13p per minute, plus your phone company's access charge